

**TRANSPORTATION SYSTEMS
AIRPORTS - MOTORWAYS**



- *Founded in 1987*
- *Multidisciplined firm*
- *All in house design*
- *More than 300 projects in 12 different countries*
- *Excellent Professional Track Record*
- *Familiarity to International Codes*

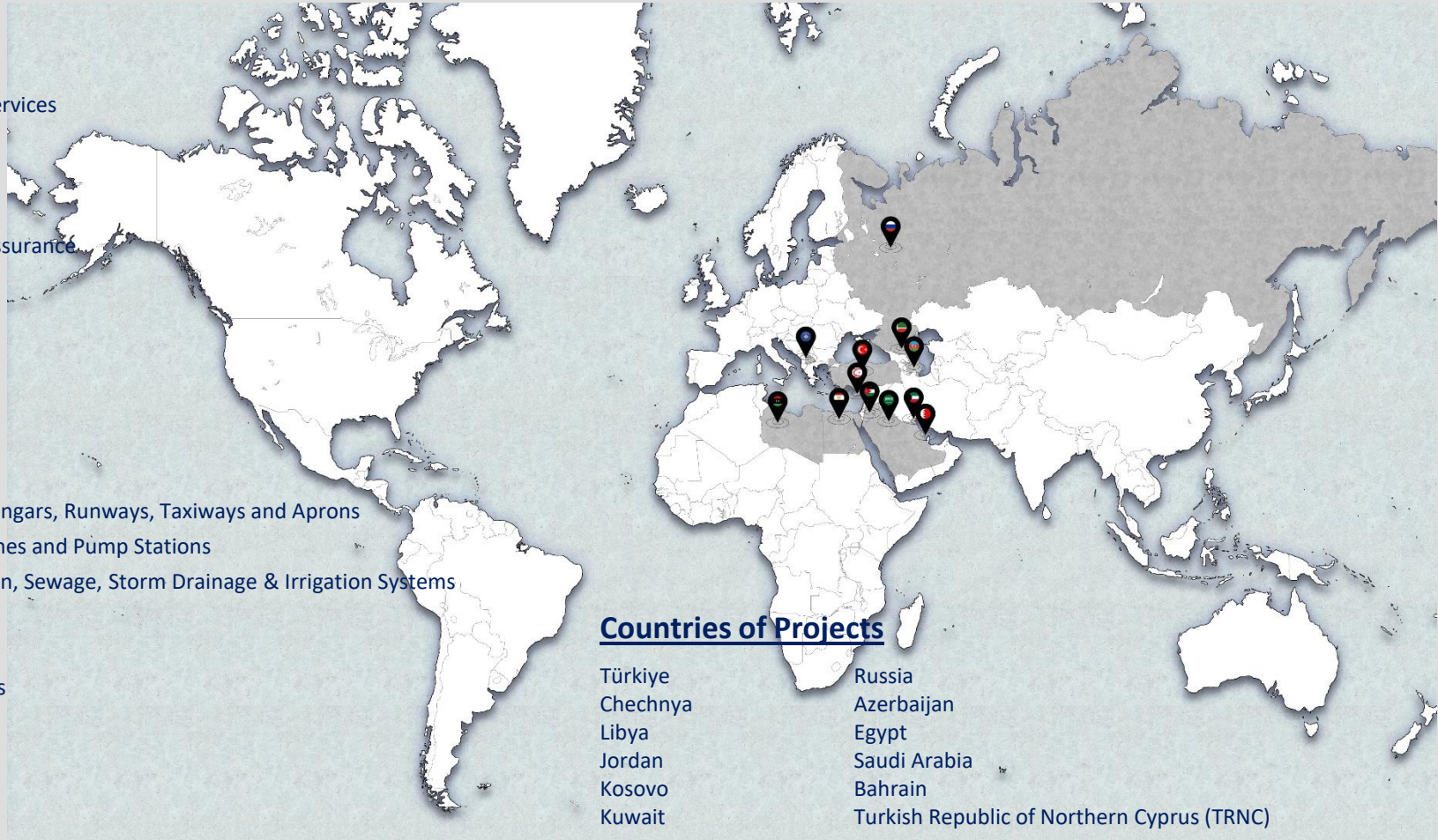


Services rendered by TMA;

- Feasibility Studies
- Engineering and Architectural Design Services
- Technical Consultancy Services
- Due Diligence Services
- Structural Assessment Services
- Construction Management & Quality Assurance
- DOR (Designer of Record) Services
- Energy Efficiency Surveys
- Testing and Commissioning Services
- Value Engineering Services

Fields of Services;

- Roads, Bridges and Viaducts
- Airport Facilities, Terminal Buildings, Hangars, Runways, Taxiways and Aprons
- Hydraulic Design, Water Conveyance Lines and Pump Stations
- Infrastructure Design, Water Distribution, Sewage, Storm Drainage & Irrigation Systems
- Industrial Facilities
- Military Facilities
- Commercial Buildings, Shopping Centers
- Housing, Hotels and Holiday Villages
- Power Generation and Transmission
- Hospitals
- Fire Engineering



Roketsan, Turkey



USACE, Germany

Metis, Turkey



US Embassy, Ankara / Adana

Taşyapı, Turkey



AAFES, Germany



TC MSB, Turkey

USAF, Turkey



ANC, Libya

Aytekin-Serol, Turkey



DSİ, Turkey

Proctor & Gamble, Russia



Relyant Global, USA

GAMA, Turkey



ERMA, Libya

ANE, Libya



MMRA, Libya

AFCEC, USA



SWCC, Saudi Arabia

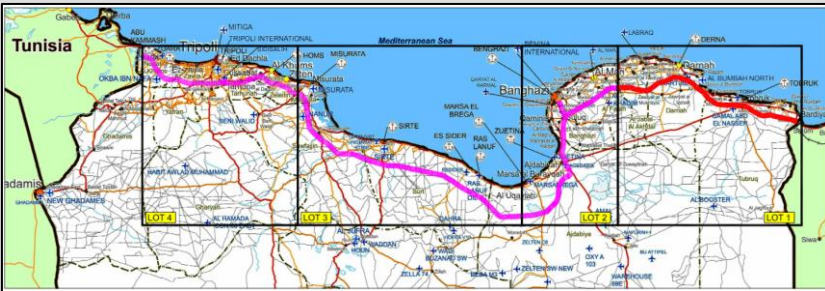
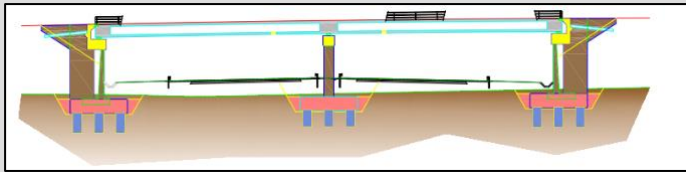
Limak, Turkey & International Branches



Eldorado Gold/Hatch, Canada



The work included complete preliminary design of 1273 km motorway; as well as detail design of 400 km motorway with interchanges, service, park and maintenance areas, bridges, viaducts and other structures; preparation of technical specifications and tender documents.



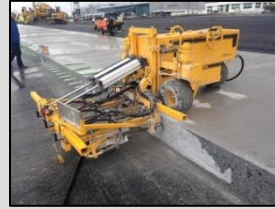
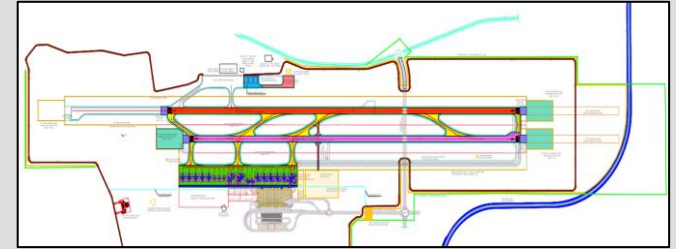
- Interchanges 13
- Service Areas 3
- Park Areas 2
- Maintenance Area 1

- Overpasses 41
- Underpasses 49
- Railway Underpasses 3
- TOTAL CROSSINGS 93**



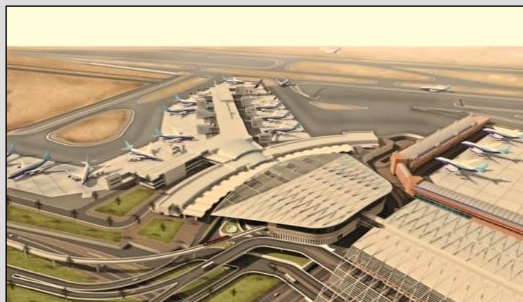
- Viaducts 16
- Overpasses 41
- Underpasses 49
- Railway Underpasses 3
- TOTAL NO OF STR 109**

The project includes complete civil and airside facilities design and technical consultancy during construction; including new runway, reconstruction of the existing runway, apron for new terminal, taxiways, fuel system, airfield ground lighting system, navigation system and complete infrastructure systems.



Cairo International Airport - Egypt

A design and construction project of Cairo International Airport Terminal Building No.2, with approximately 340 000 m2 of airside facilities and a new Terminal Complex of approximately 230 000 m2. Construction of a new wing and airways as well as all infrastructure and fuel system, including fire and life safety engineering are included.



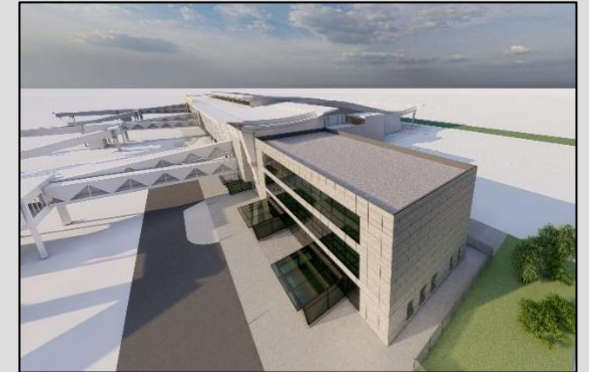
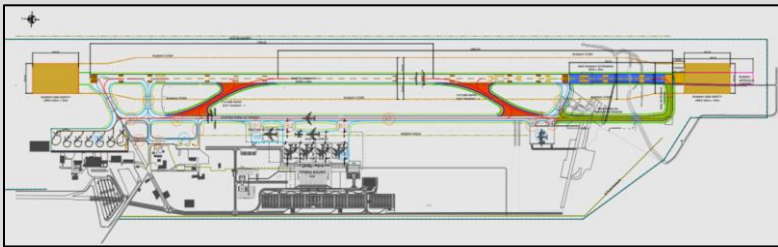
Pristina International Airport Upgrading Works

Adem Jashari, Kosovo, Phase I and II

Phase I: the design, final master plan and documentation of new terminal apron, apron services and facilities as well as infrastructure, and airside facilities.

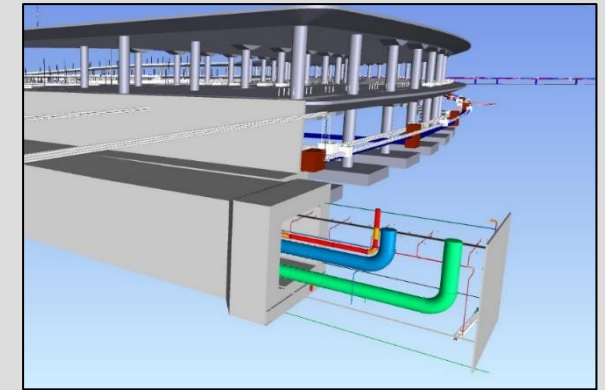
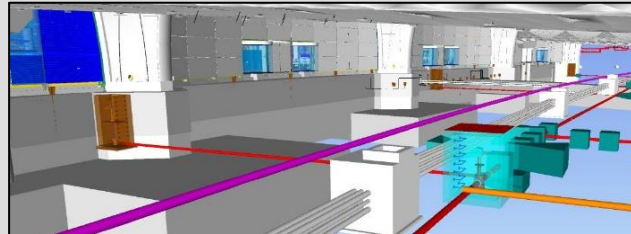
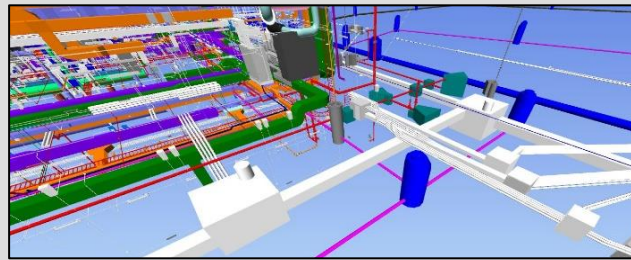
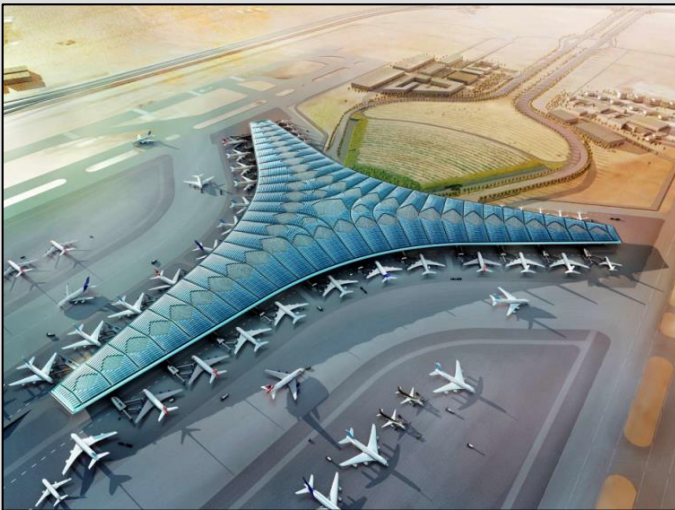
Phase II: complete civil and airside facilities design including extension of the existing runway and parallel taxiway, rapid exit taxiways and airfield ground lighting & navigation systems.

Passenger Terminal Extension Phase 1 - Pier Block Extensions



Package 1 and Package 2: TMA have performed coordination and superposition studies and technical consultancy services on infrastructure systems for LIMAK A.Ş.

Package 3: TMA have started to study on Airside facilities design.





Principles of the Company:

Munis Özer
Ali İhsan Uslu
Şirin Başarankut

Business Development Director:

Ayça Sağcan

Mailing Address:

TMA Mühendislik Ltd. Şti.
Çobanyıldızı Sok. 1/3, Çankaya, Ankara, 06680, Türkiye

Tel:

(90) 312 467 1427 / (90) 312 467 1447
(90) 312 427 2409 / (90) 312 427 1907

Fax:

(90) 312 467 1451

E-mail:

tma@tmaeng.com
munis.ozer@tmaeng.com; ayca.sagcan@tmaeng.com

Web Site:

www.tmaeng.com

